



Criteria 7: Institutional Values and Best Practices

7.1.3 Facilities in the Institute for the management of the following type of degradable and non-degradable waste. (Solid waste management, Liquid waste management, Bio medical waste management, E-waste management). Managing both degradable and non-degradable waste is crucial for sustainability.

To nurture healthy institutional habits to maintain and dispose degradable and non-degradable waste, ZIMCA has an appropriate provision for cleaning, hygiene, and waste disposal.

1. Solid Waste Management:

To collect solid waste, dustbins are kept at various spots like faculty cabins, classrooms, inside the campus to collect waste. The dustbins are kept on the basis of identified places and appealed to all the students and staff to use them to collect garbage.

To avoid unnecessary garbage, the Faculty members and office staff utilized one-sided used papers for printouts of internal communication work. Old newspapers and both side used papers are given for recycling with proper way. The institute promotes waste management activities through various activities like Mahatma Gandhi Jayanti Celebration as Swachh-Bharat Mission were best from waste activity conducted. We use Blue dustbin for dry and bio degradable waste & Red dustbin for dry and non bio degradable waste.

2. Liquid Waste Management:

To manage Liquid waste generated through washrooms and canteen directly connected to the septic tank followed by directly connecting with Narhe Gram panchayat's main drainage lines for further disposal. The awareness sessions are arranged on the proper waste management and also to create disposal awareness for the students and encouraged them to contribute to maintain environmental consciousness. As ZIMCA is a Management institute and hence liquid waste doesn't create any dangerous like chemical factories etc. We use Green dustbin for wet and bio degradable waste.

3. E-waste Management:

In this electronic era, Institute also uses various types of ICT gadgets such as LCD projectors, computers, SMPS, Monitor stand, RAM, printers, Cables, Cd's, Lan cables, motherboard etc. As these products degrades after its long term use and also due to advancement in technology. The institute has a proper disposal and e-waste management system where all dead ICT gadgets are scraped with e-waste recycling agency appointed by Zeal Education Society.





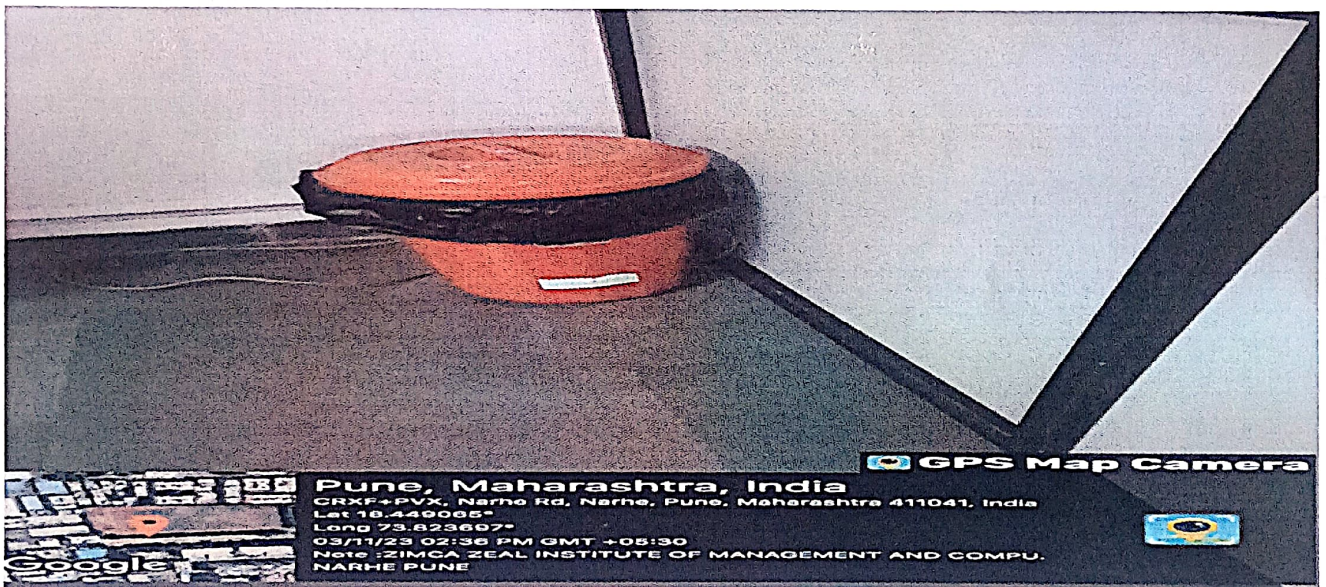
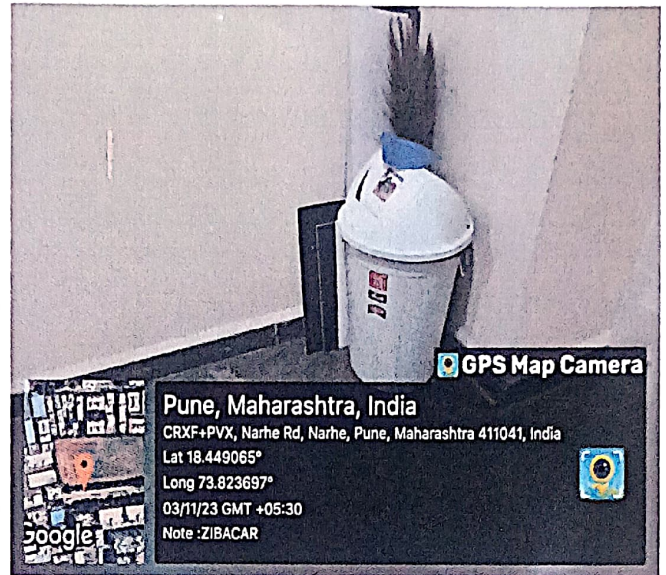
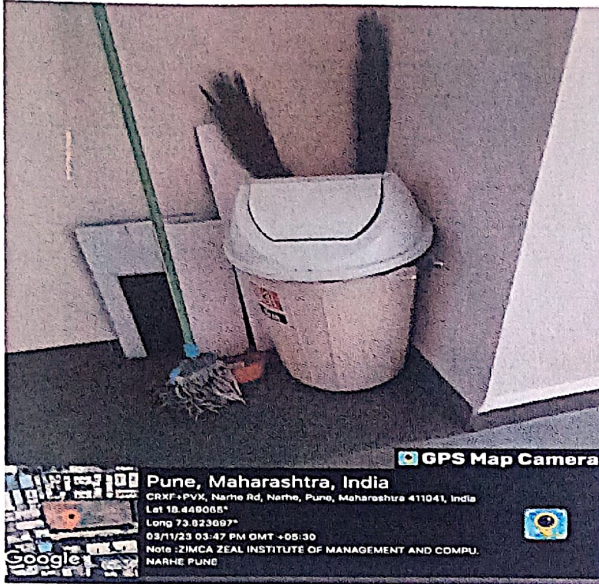
ZEAL EDUCATION SOCIETY'S
**ZEAL INSTITUTE OF MANAGEMENT AND COMPUTER
 APPLICATION (ZIMCA)**
 NARHE | PUNE | INDIA



PUN CODE: IMMP015570

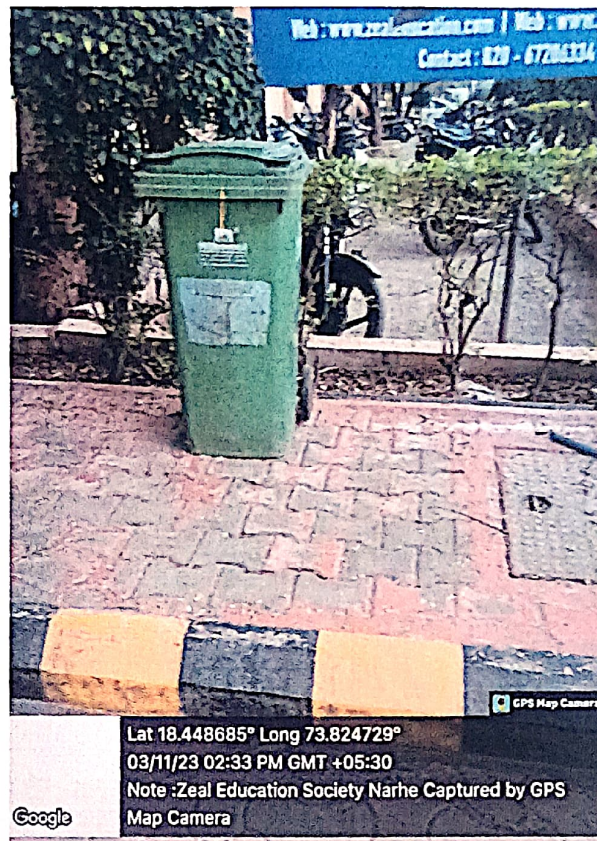
DTE CODE: MB6195

AISHE CODE: C-50909

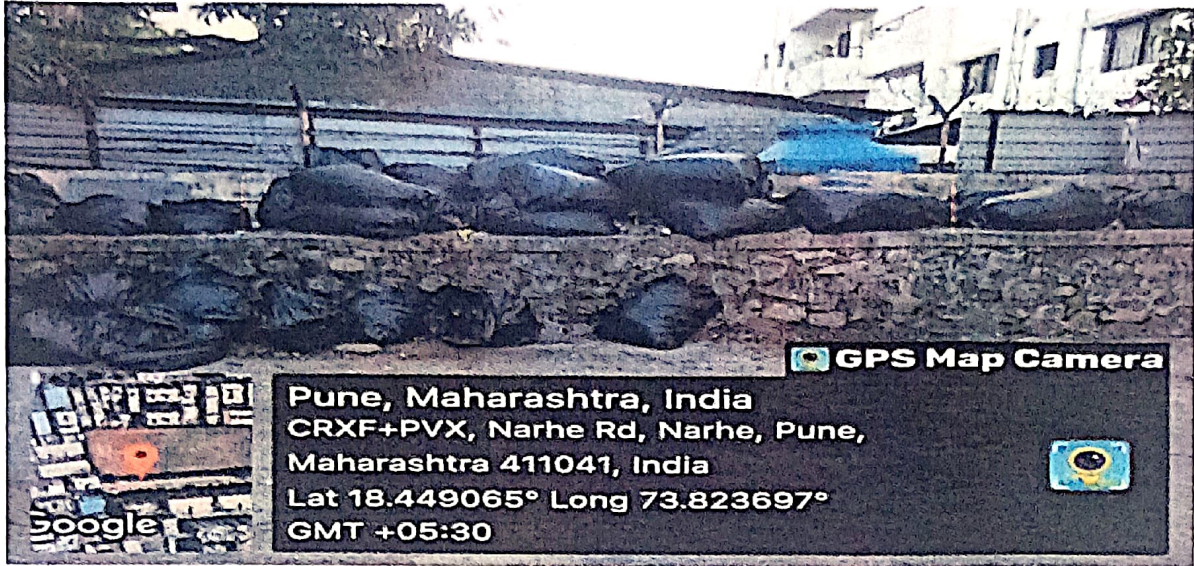


Dustbins at various locations

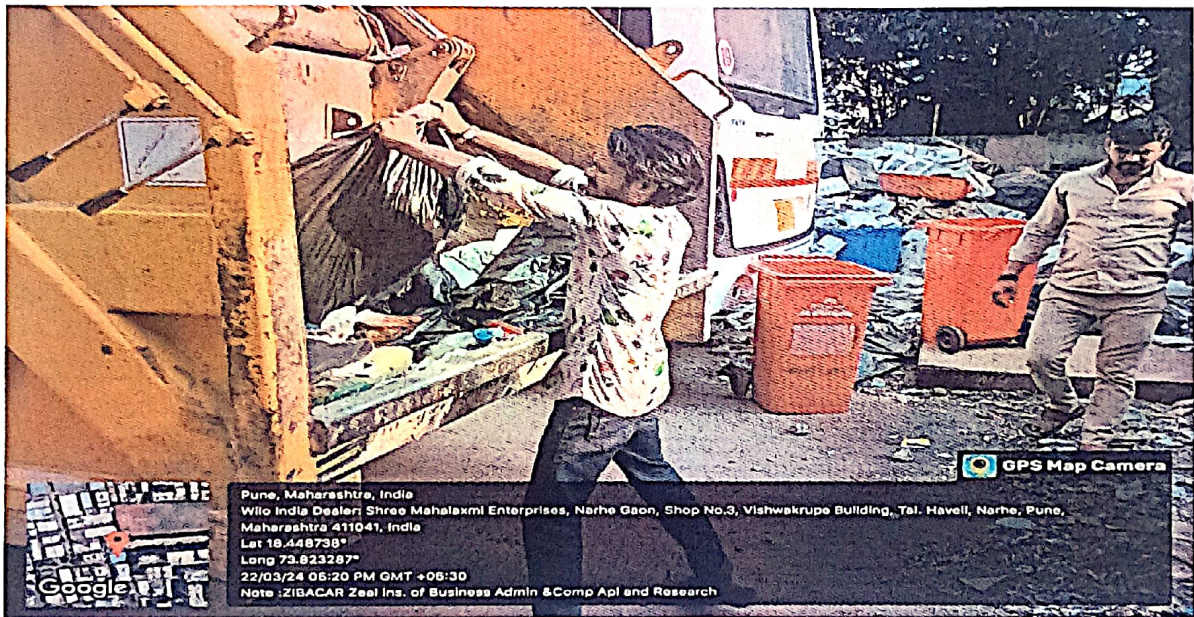




Blue & Green Dustbin



Garbage Collected at one place



Garbage Collection and transportation by PMC Van